



*John Morris*®

Common Made Uncommon









*John Morris®*



ENCASA

## About The Company

John Morris was started in the year 1999 by Mr. Nikhil Sheth.

The Sheth brothers have since made this a quality shirt manufacturer of affordable fashion garments. We are committed to shaping the fashion industry by exploring new avenues and setting a benchmark in the fashion fraternity with a fine blend of unmatched quality, premium picked fabrics and perfect fits. Our design and quality are of the highest standards. Our USP is the price advantage that we offer to our customers combined with expert craftsmanship.

The company's brand portfolio includes 2 labels - JOHN MORRIS, which is an affordable formal segment, and our recently introduced label ENCASA, which caters to a more casual segment. It also includes a stylish Club wear range which feature a vast range of colours and fine detailing. Both these collections feature 100% Cotton fabrics which are finely blended for comfort and style.

In short, we live upto our motto....

**COMMON MADE UNCOMMON**



*John Morris*  
SHIRTS

This entire range of stylish formal shirts are made of finely processed cotton that allows for supreme comfort to the wearer. The vast range of colour options, the finely detailed styling on the collars and cuffs like a mix and match pattern and contrast piping, make the range stand out from the rest.













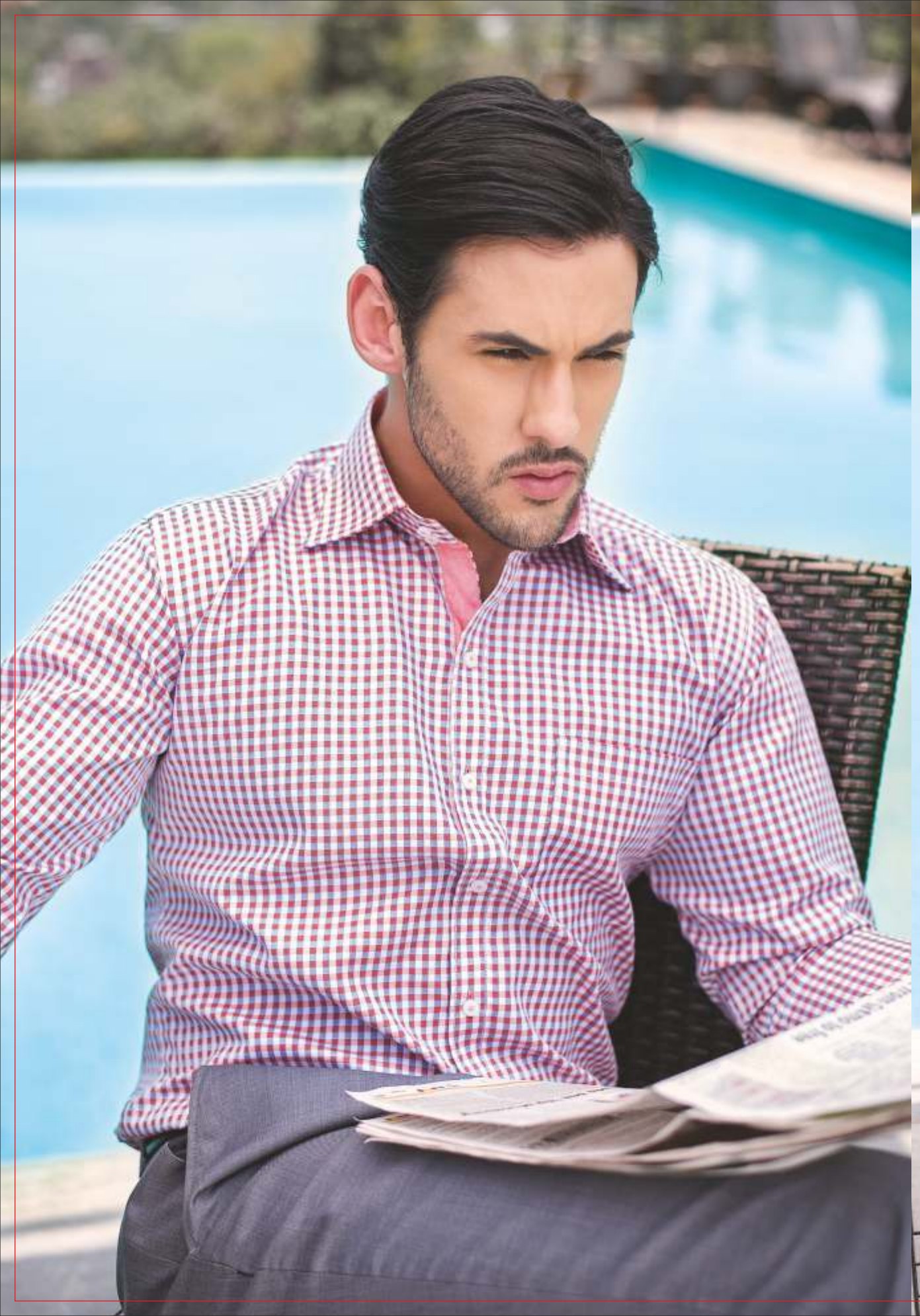
*John Morris*  
SHIRTS















The John Morris collection has shirts in checks, stripes and fresh hued solids that are a visual delight.

Their fine detailing and cutting edge styling are unique...contrast plackets, straight collars that are flattering, and cuff detailing that are both subtle and unusual.

The cuts are fitted to the body, ensuring that the fits are both slim yet relaxed.

A Formal shirt with a contemporary fit.



*John Morris*  
S H I R T S







John Morris introduces our new Club Wear range. The styling and fabric are of the highest quality, yet there is a conscious effort to keep the range affordable and keep the range within the reach of all price segments.

Styling like an attached collar with stripe detailing, contrast piping, trims that are mix and match to impart style, and innovative detailing like a slit pocket.



ENCASA  
CLUBWEAR



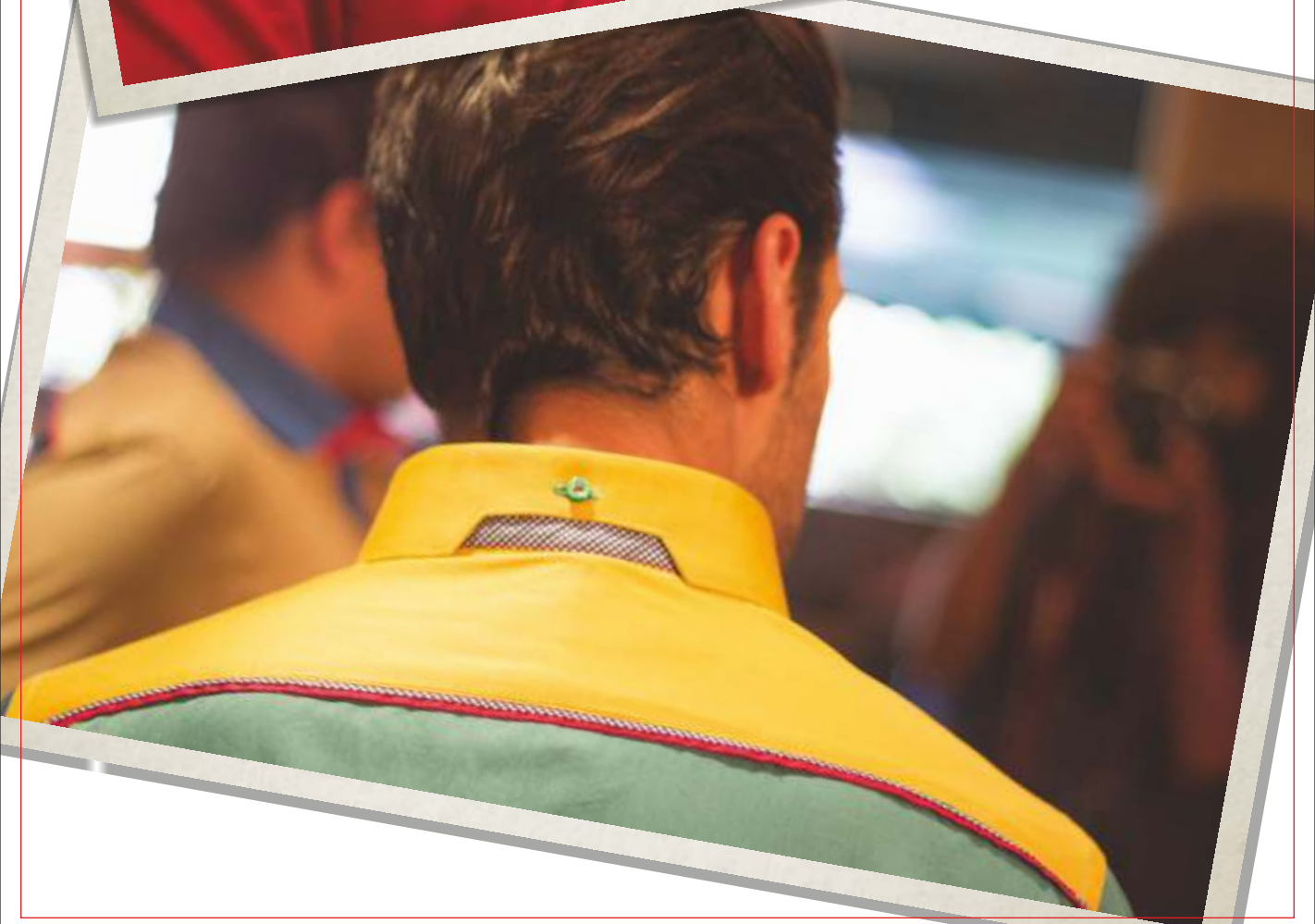

















Encasa Clubwear has an unusual design policy - to surprise you at every turn. For those who like colour blocking, and standing out in a crowd, this collection is just perfect.

Colour and texture, print and solids....we have experimented with every permutation. The end result is for all to see....a vibrant range quite unlike the normal tenets that is deemed as Club wear. As usual, Encasa breaks the mould and emerges a winner.







John Morris Presents

# A RANGE OF STUNNING CASUALWEAR & CLUBWEAR

Comprising the latest cutting edge styles and fabrics of the finest quality. The range features a vast range of colours and textures with the softest wash for your comfort and easy durability.

With our reputation for quality at affordable rates, our Casual shirt range as well as the Club Wear range, is a welcome extension of our Brand portfolio.





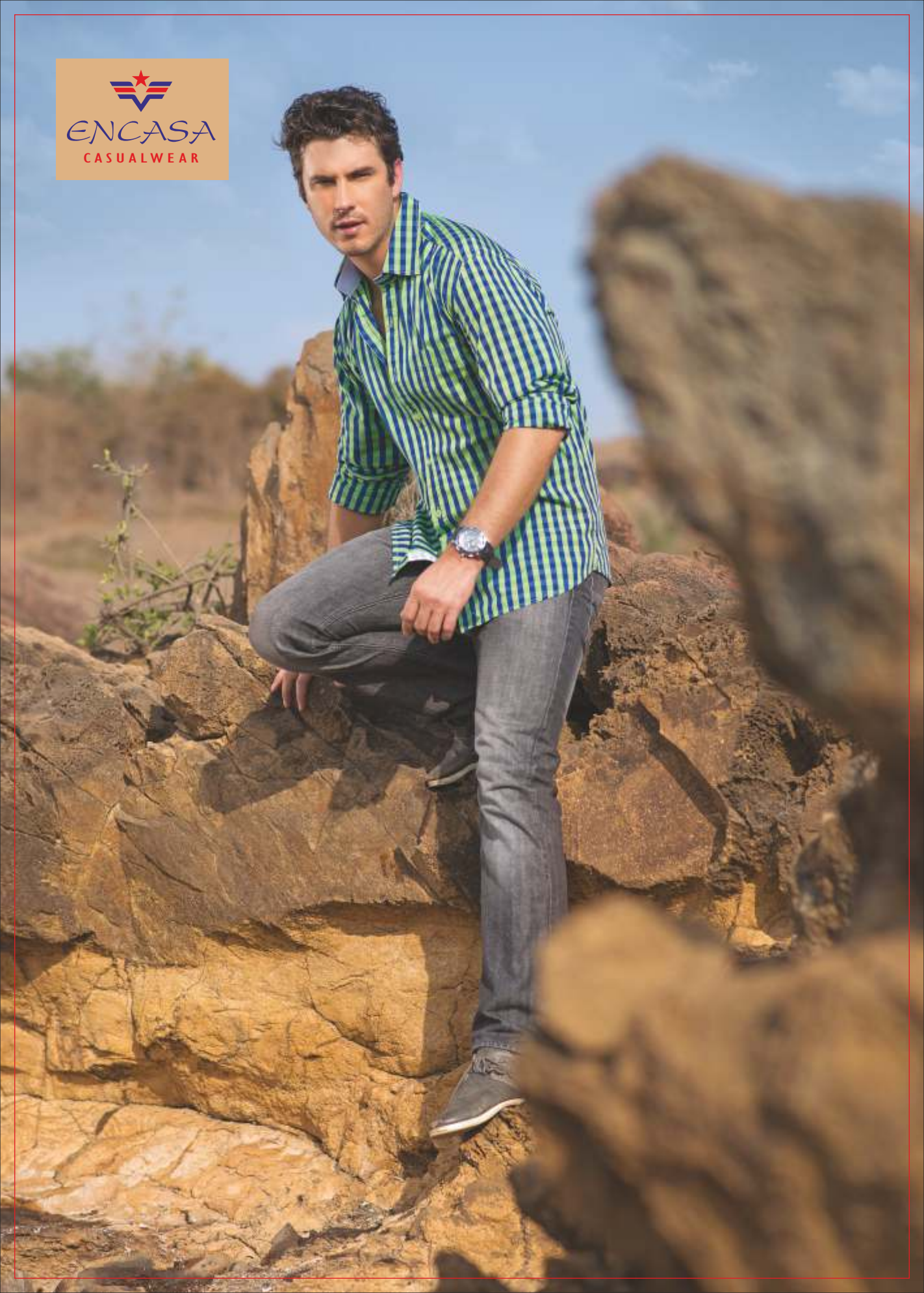
















Warm earthy tones meander to rustic hues like ochre and sienna and graduate to deep vibrant colours like burnt umber and orange.  
The Encasa collection is a delight to behold.







The Casual Wear range is conceived as a range of high end garments with an affordable price range. Encasa has a range of extremely stylish shirts that are the latest fashion with superb fabric and fantastic cuts.....at extremely affordable rates. So come on, go out there and sport our new range!



ENCASA  
CASUALWEAR

Encasa prides itself on their Casual wear range. It features shirts in fabrics that are superior and fits that are almost made to measure.

The styling is a surprise feature that is both attractive and stylish.

Mix and match cuffs and short point collars are added for a contemporary look. These are complemented by the stunning range of colours.





















We at Encasa believe that age is just a number. For the young and the Young-at-heart, we have a quirky range of discreet polka shirts and tasteful prints that you can sport even at work.

For those in a more sedate mood, Encasa features rich hues that are easy to match and blend into your wardrobe, while adding volumes of style to your persona.











Mid tones mix with aqua  
brights to complement  
this checked shirt. Worn  
with neutral bottoms,  
this shirt can take you  
from the Office during  
the day, to a relaxed  
evening with friends  
after hours, effortlessly.



Encasa takes great pride in introducing a range of shirts that multi task for you. It is designed so that a pair of chinos will make you look smart yet casual at work, while you can pair it with khaki shorts to give you a relaxed feel for a day at the beach. Add a smart jacket, and that will see you look stylish and debonair for an evening out with your work pals at the neighborhood pub. Effortless panache.







Concept & Shoot:  
COLORTREE  
[www.colortree.in](http://www.colortree.in)  
+91 9833661196



*John Morris*<sup>®</sup>

Common Made Uncommon

For Trade Enquiries:

J.M. Clothing,

Gala No.2, High Tech Ind. Estate, Caves Road,

Near Bank Of Baroda, Jogeshwari (East)

Mumbai - 400 060

Mobile No. : 9820244209

Email: [tejas.sheth31@gmail.com](mailto:tejas.sheth31@gmail.com)

Website : [www.johnmorris.in](http://www.johnmorris.in)